

# **Can *Early* Intervention in Intergenerational Trauma Improve Health and Save Lives?**

ACES HEALTH CHAMPIONS GATHERING

***NORA MONTALVO-LIENDO, RN, PHD, FAAN***

***MAY 20, 2022***



# Objectives

Understanding the complexity of violence against Hispanic women living in the Texas-Mexico border

Discuss a relevant case where intergenerational trauma is evident

Identify strategies to help mitigate violence and child sexual abuse

# Texas-Mexico Border



©2011 Brownsville.com



# BISD Enrollment

- Brownsville Independent School District(BISD)  
**(37,000)**
- Elementary  
**(17,563)**
- Middle School  
**(8,354)**



Hispanic Institute Photo



# Scope of the Problem

## IPV Clients

- **2019-2021**  
**1,472**
- **Total children**  
**exposed to IPV**  
**1,059**

## Child Sexual Abuse

- **959 children**  
**between the ages of**  
**3 and 17**

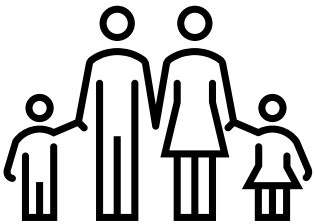


## Poll Question

- **Do you assess/screen for ACEs?**
- **Yes**
- **No**
- **N/A**



# Childhood Exposure to Intimate Partner Violence



IPV is higher in couples with children

(Bair-Merritt, 2010)

Children are both direct & secondary victims of IPV

(Jaffe et al., 2014)

Childhood exposure to IPV results in adverse physical, mental, and other outcomes throughout the lifespan (Bair-Merritt et al., 2014; Felitti et al., 1998)

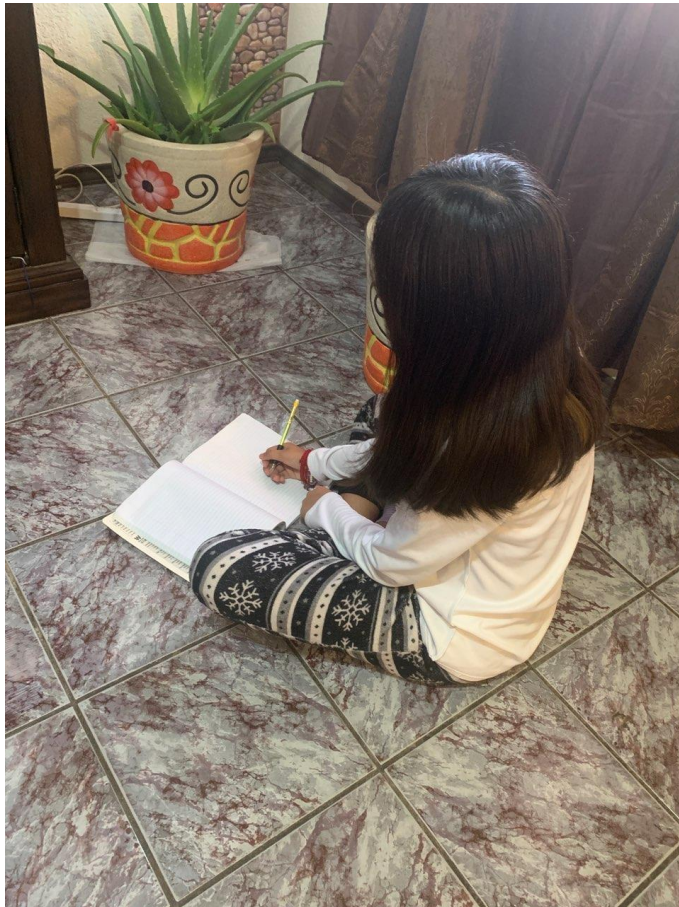
## Poll Question

- **Do you assess/screen for intimate partner violence (IPV) in the household?**
- **Yes**
- **No**
- **Not sure**
- **N/A**





# Adverse Childhood Experiences



Permission to use, fowgroup



# The State of Texas vs. Melissa Lucio

- The first Hispanic woman sentenced to death row in Texas, Lucio has been in prison for 14 years and was scheduled to be executed April 27, 2022.



'The Brownsville Herald, Essex, A.

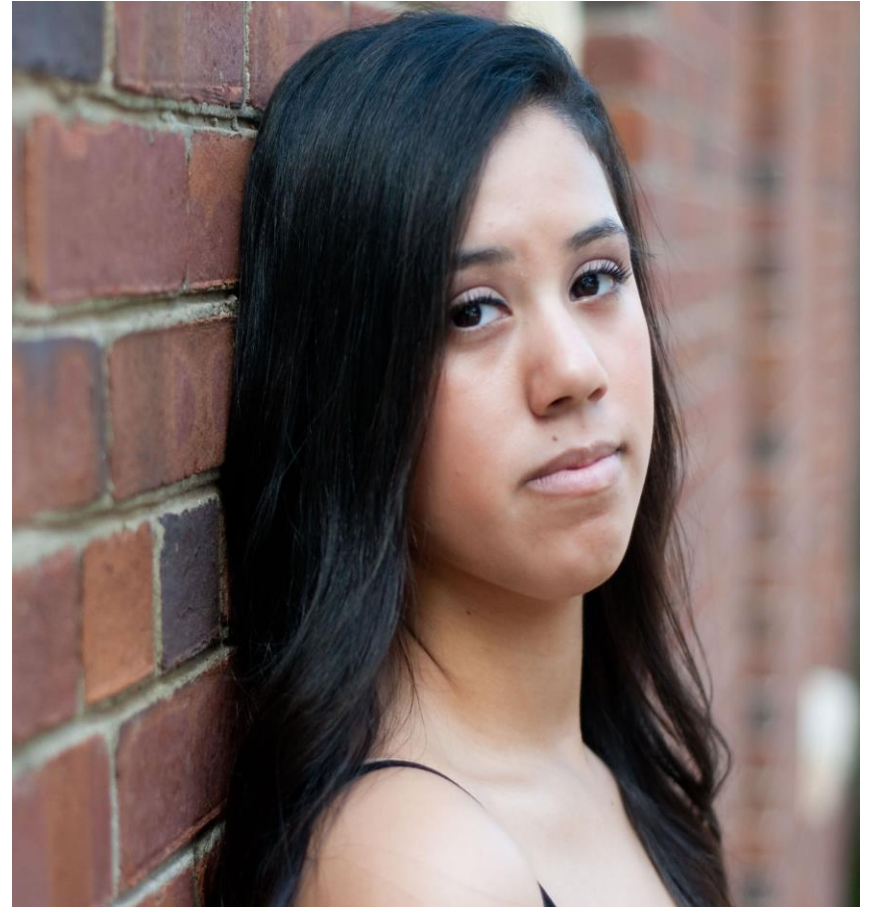


## Poll Question

- **Do you assess/screen for a History of IPV exposure for 2 generations?**
- **Yes**
- **No**
- **N/A**



# Intergenerational Impact



Latina Teen Project  
istockphotos



# Intergenerational Impact

Mental  
health

Chronic  
Illnesses

Chronic  
behavioral  
disorders

Substance  
Use Disorder

Suicide



## Poll Question

- **Do you screen/assess for the impact of trauma (i.e., mental health, chronic illness, SUD, suicide, etc.)?**
- **Yes**
- **No**
- **Sometimes**
- **N/A**



# Saving Lives-Takes all of Us!

"Forget about them. Let them get lost in the system" Attorney

"Go out there and get her out as quickly as possible, I don't want her sitting in the lobby" OB

"She deserves what she gets, she keeps having his kids and returning back to him" Nurse

"I called 911, and look what happened to me and my daughter-in-law..."



## Poll Question

- **Do you assess/screen two generations for ACEs?**
- **Yes**
- **No**
- **Sometimes**
- **N/A**





# *Early Intervention*



- School based clinics



- A multi-disciplinary approach in schools



- Education & Awareness programs: OB and Pediatric practice settings

# **Poll Question**

**Do you implement interventions when intergenerational trauma is documented?**

**Yes**

**No**

**N/A**



# Better Health-Saving Lives



Permission to use on file  
(FOW)





# References

<https://www.census.gov/quickfacts/fact/table/brownsvillecitytexas>

(M. Avila, personal communication, May 12, 2022)

(S.V. Alvarez, personal communication, April 20, 2022)

(D. Cerda, personal communication, April 20, 2022)

Howell, K.H., Miller-Graff, L.E., Martinez-Torteya, C., Napier, T.R., Charting a course towards resilience following adverse childhood experiences: Addressing intergenerational trauma via strengths-based intervention

<https://nlci.org/build-will-come-new-evidence-latino-families-use-early-care-education/> (Hispanic Photograph) Retrieved May 13, 2022.

Larson, S., Chapman, S., Spetz, J., & Brindis, C. D. (2017). Chronic childhood trauma, mental health, academic achievement, and school-based health center mental health services. *Journal of school health*, 87(9), 675-686.

(D. Lopez, personal communication, May 12, 2022)

Love, H. E., Schlitt, J., Soleimanpour, S., Panchal, N., & Behr, C. (2019). Twenty years of school-based health care growth and expansion. *Health Affairs*, 38(5), 755-764.

Page, R., Montalvo-Liendo, N., Nava, A., Chilton, J. (2021). Now My Eyes are Open: Latina Women's Experiences in Long-Term Support Groups for Intimate Partner Violence Survivors. *International Journal of Mental Health Nursing*. <https://doi.org/10.1111/inm.12840>

Ocoha, L.G., Fernandez, A., Lee, T.K., Estrada, Y., Prado, G. (2022). The intergenerational impact of adverse childhood experiences on Hispanic families: The mediational roles of parental depression and parent-adolescent communication.

Stempel, H., Cox-Martin, M. G., O'Leary, S., Stein, R., & Allison, M. A. (2019). Students Seeking Mental Health Services at School-Based Health Centers: Characteristics and Utilization Patterns. *Journal of school health*, 89(10), 839-846.

