

# "THE IMPACT OF INFUSING TRAUMA INFORMED SYSTEMS OF CARE INTO BEHAVIORAL HEALTH GRADUATE PROGRAMS OF STUDY"

---

GINGER MEYER, MSW, LCSW, CCTP

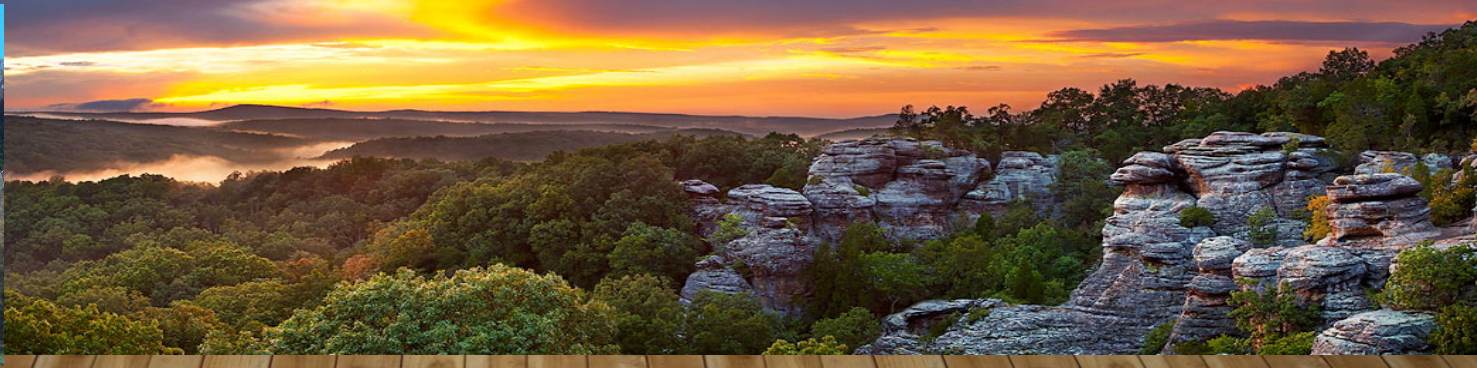
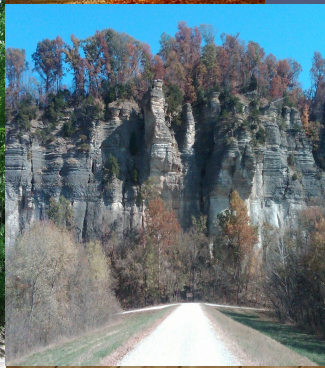
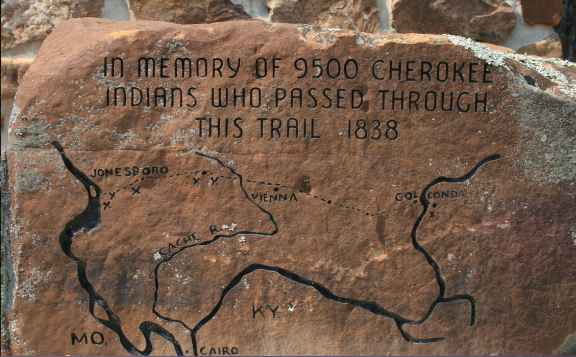
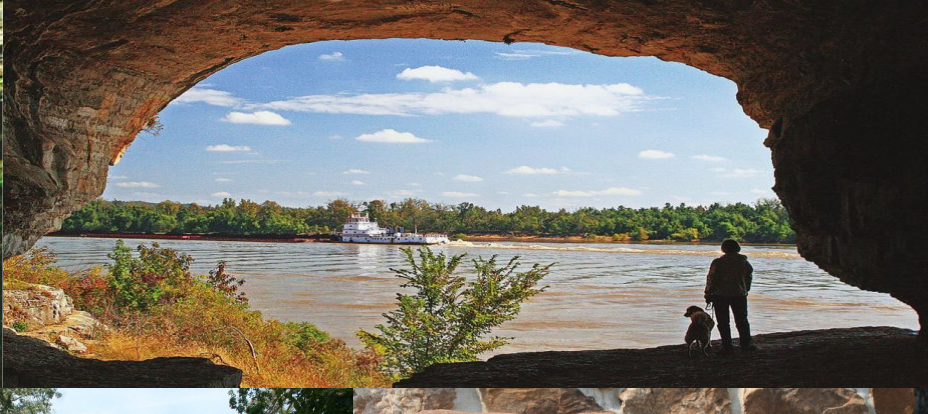
SIU SCHOOL OF MEDICINE DEPARTMENT OF PEDIATRICS

CHILDREN'S MEDICAL AND MENTAL HEALTH RESOURCE NETWORK

GMEYER@SIUMED.EDU

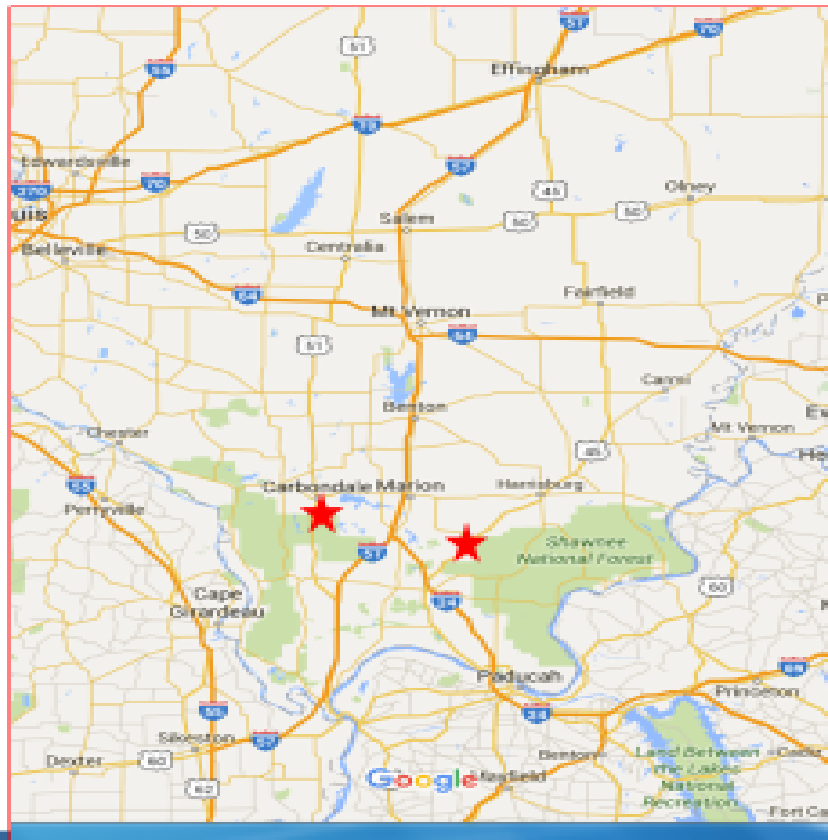








# STATE WIDE DATA BASE 2014



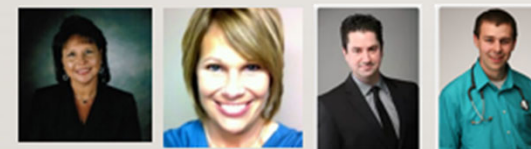
## TF-CBT Providers

The Two Practitioners  
made the list and  
were not Nationally  
Certified Clinicians at  
the time

# MEET OUR TEAM



## MEET OUR FQHC MEDICAL COLLABORATIVE TEAMS:



# Creating a Resilient and Trauma-Informed Community (RTIC)

A framework to align the work of a community

**Resilient and Trauma-Informed Community** is a framework adopted by community partners. The Foundation of our collaborative effort is built upon what we have learned about Adverse Childhood Experiences (ACEs).

## ACES influence adult health

More ACEs lead to an increased risk for poor mental and physical health outcomes.

## Resilience can help

Resilience is the ability to bounce back. With appropriate supports and help, people can heal and thrive despite past experiences.

## Trauma-Informed Care (TIC)

A perspective shift that promotes recovery and acknowledges the role of trauma in someone's life.

## Healing takes a village

Together, we are working to disrupt the cycle, strengthen resilience and restore lives. A whole community effort is needed to build a place that is connected, healthy and resilient.



<https://www.resilientcommunitieswi.com/>

# KEY COMPONENTS IN CURRENT TRAINING

- Provide Didactic Training to 312 Trauma Fellows over the course of 11 year grant, their experimental agency supervisor, MSW faculty and staff, and community of care cluster professionals- 75 hours of in person training, 30 hours of online training, 12 hours of on demand web based training, 4 hours of hybrid training. At least 7 hours training directly with medical provider students from family practice and the PA program.
- Orientation Session for Trauma Fellows, supervisors, MSW faculty, core team, professional trainers, school of medicine partners and other stakeholders including a session on self care and vicarious trauma
- Clinical Case Presentations for the Trauma Fellows within group supervision clusters with agency supervisors, community trainers, core team, MSW faculty and staff
- Trauma Informed Community Presentation: Each Fellow is required to present on a trauma-informed topic within their clinical site agency or within the community. The topic is decided between the Fellow, their clinical site supervisor, and the community in which they are presenting to.



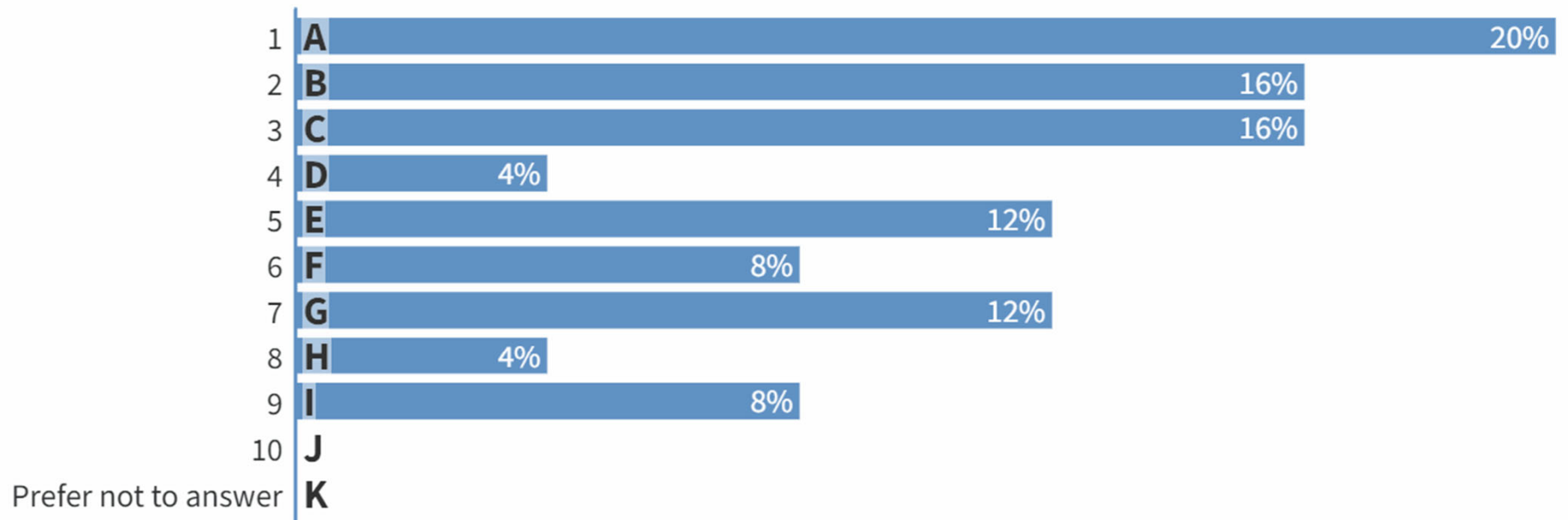
# PLACEMENT SITES

Primary Behavioral Health Providers	Schools	Feeder Agencies	
Stress and Trauma Treatment Center	5 Tri-County (2 ward; 1 murphysboro)	3 Project 12-Ways	2 Secondary 4
CAPS	3 Thomas Elementary	1 Student Health and Wellness	1
Egyptian (SUD intrest)	1 Lewis Elementary (4&5)	1 Perry Jackson County CAC	1
Emerald Therapy	1 Vienna Highschool	1 DCFS	1 Secondary 1
Arrowleaf	1 Parish Elementary	2 SIH Community Worker	Secondary 1
Cornerstone Family Therapy	1 Herrin Jr. High	1	
Centerstone	1 Kascaskia SPED	1	
Marion VA Behavioral Health	1		
Shawnee Health Services (OSUDS)	1		
<b>Total</b>	<b>15</b>	<b>10</b>	<b>5</b> <b>30</b>
Anchored Hope Secondary as a CAC contract	1		

# Do Social Work Students have Trauma?

**i** Poll is full and no longer accepting responses

## ACE Score





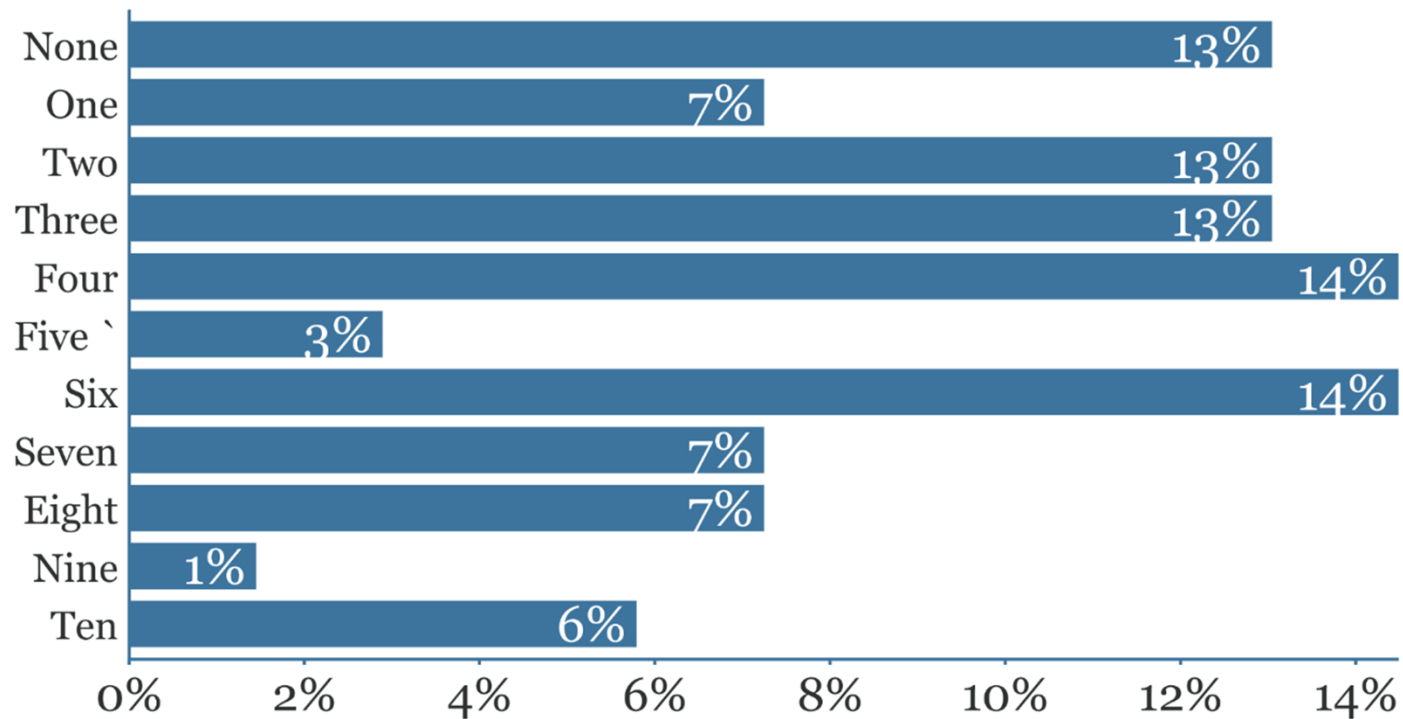
# PREVALENCE ACES TRAUMA BASED BEHAVIORAL HEALTH FELLOWS



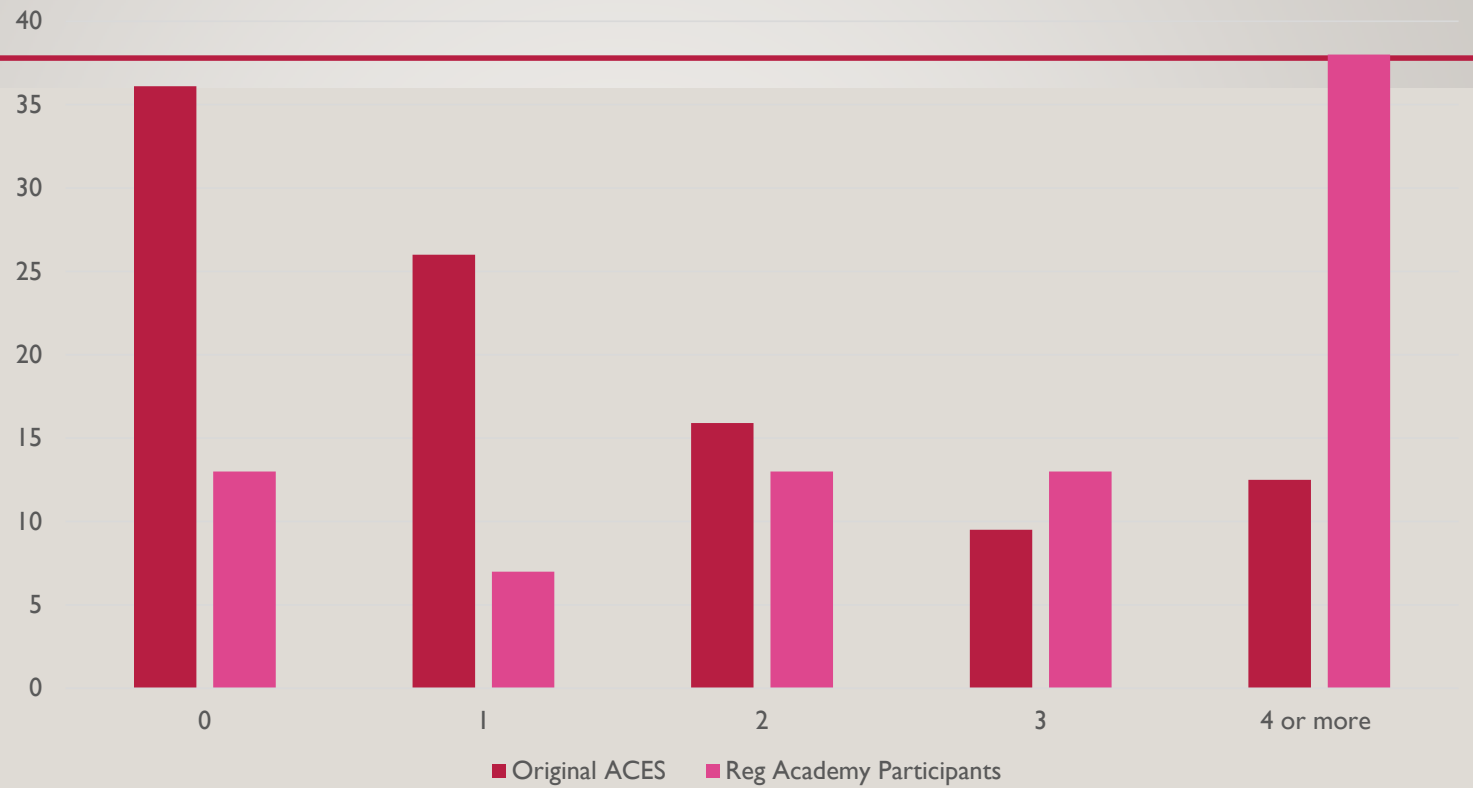
# PREVALENCE ACES REGIONAL ACADEMY MAY 4, 2019

## What Is My ACE Score?

🔒 Poll locked. Responses not accepted.

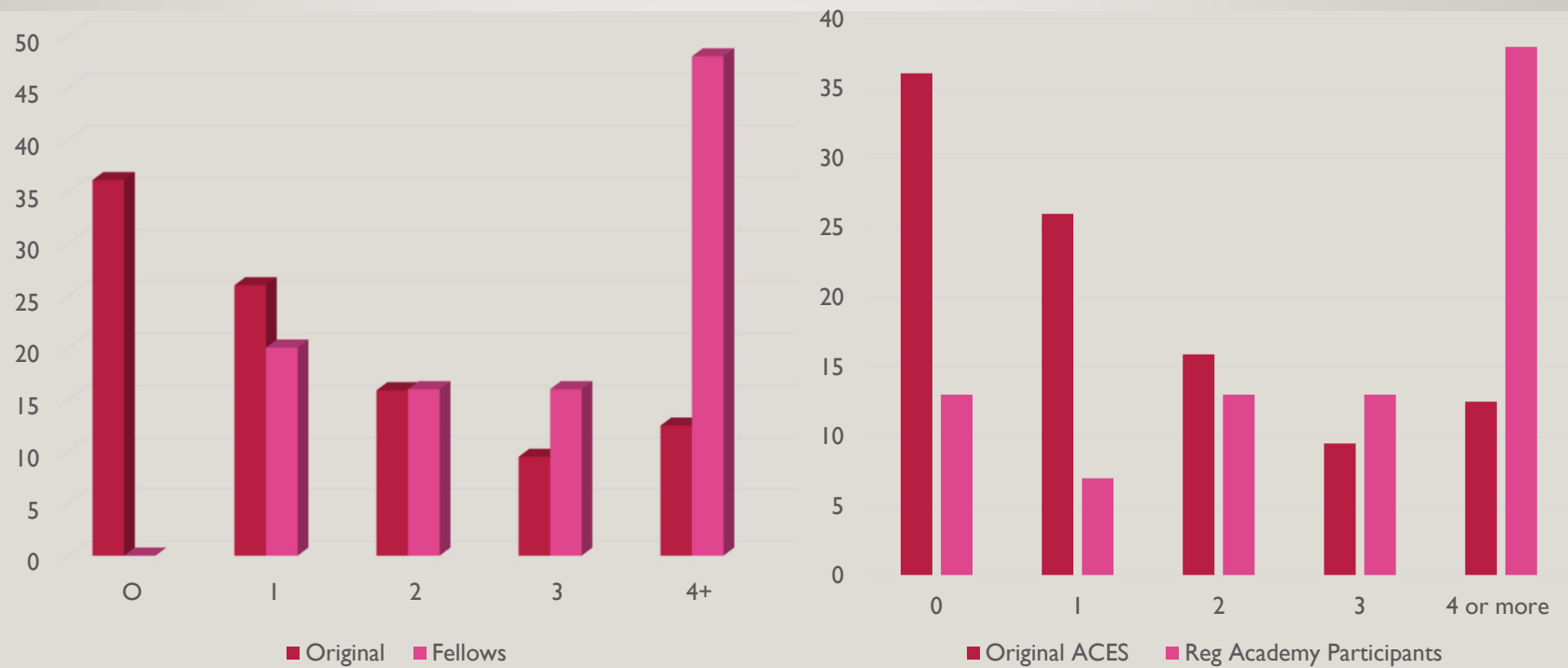


# PREVALENCE ACES REGIONAL ACADEMY MAY 4, 2019



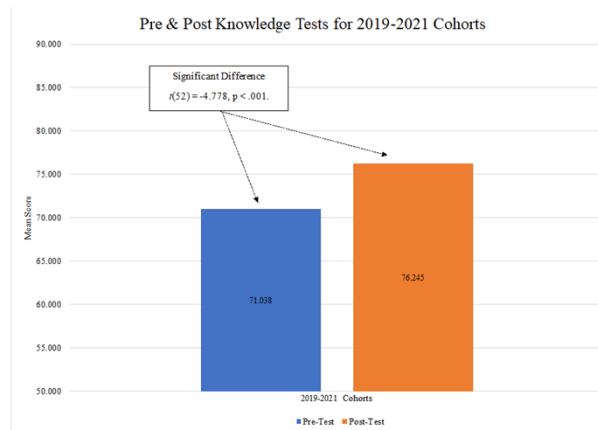


# COMPARISON TWO GROUPS IN SOUTHERN ILLINOIS

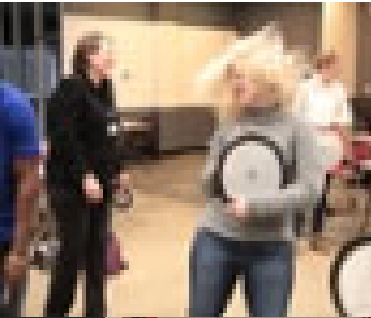


# Celebrating Accomplishments

## TF-CBT Providers Today

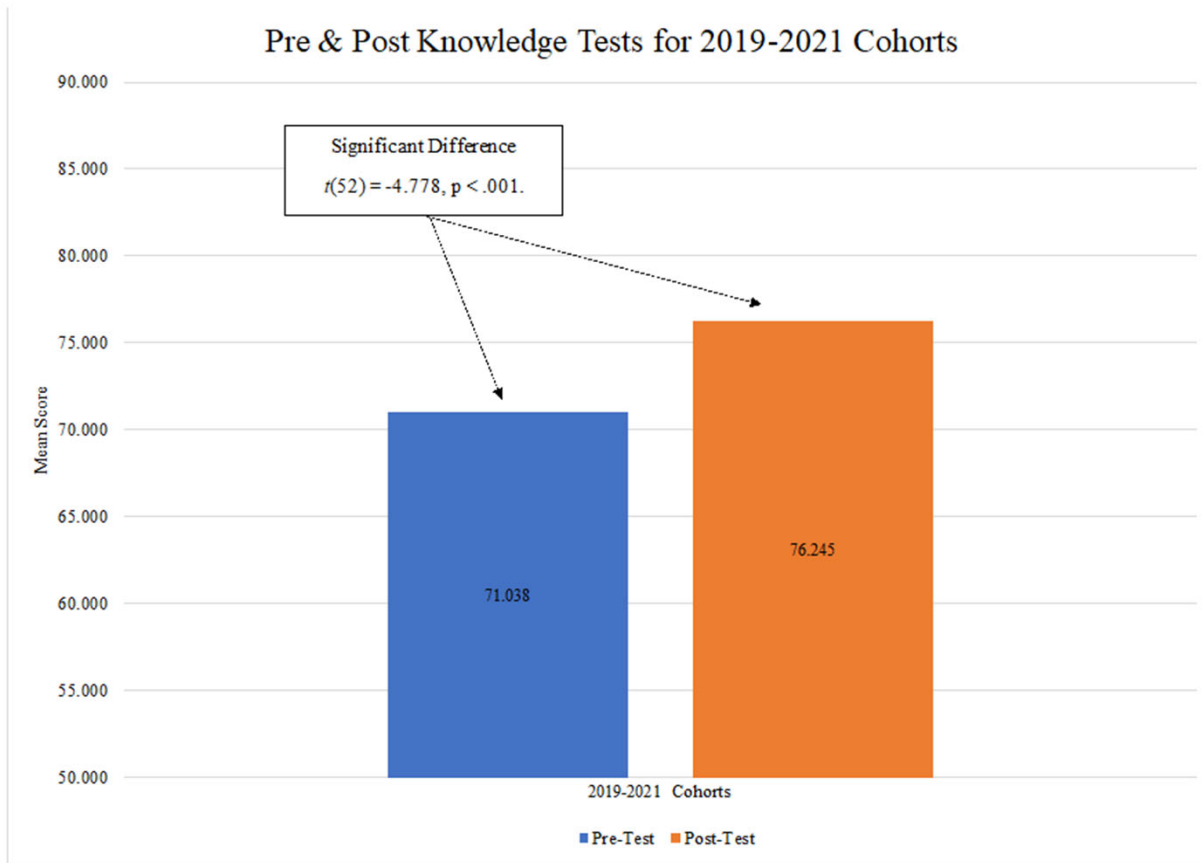








### Pre & Post Knowledge Tests for 2019-2021 Cohorts



---

# DISCUSSION

Ginger Meyer, MSW, LCSW, CCTP  
SIU School of Medicine  
Department of Pediatrics  
[gmeyer@siumed.edu](mailto:gmeyer@siumed.edu)